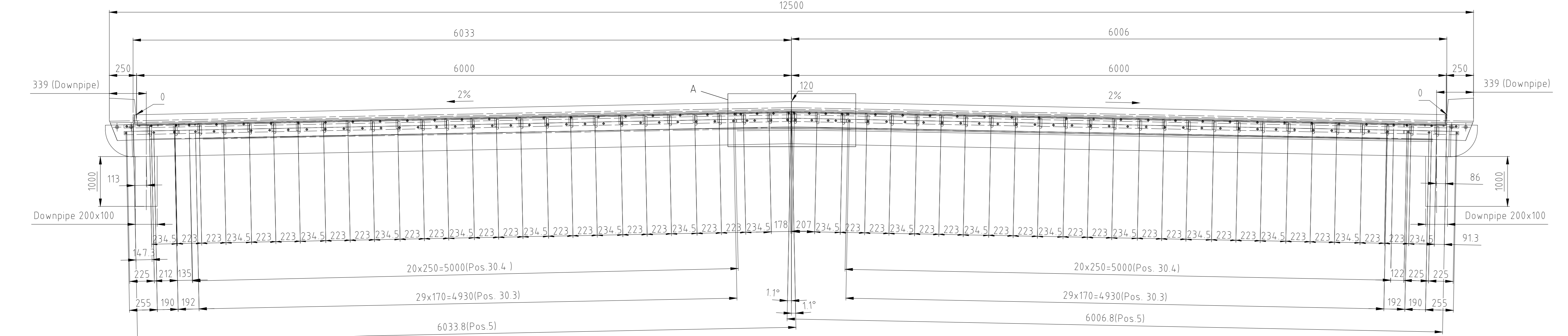
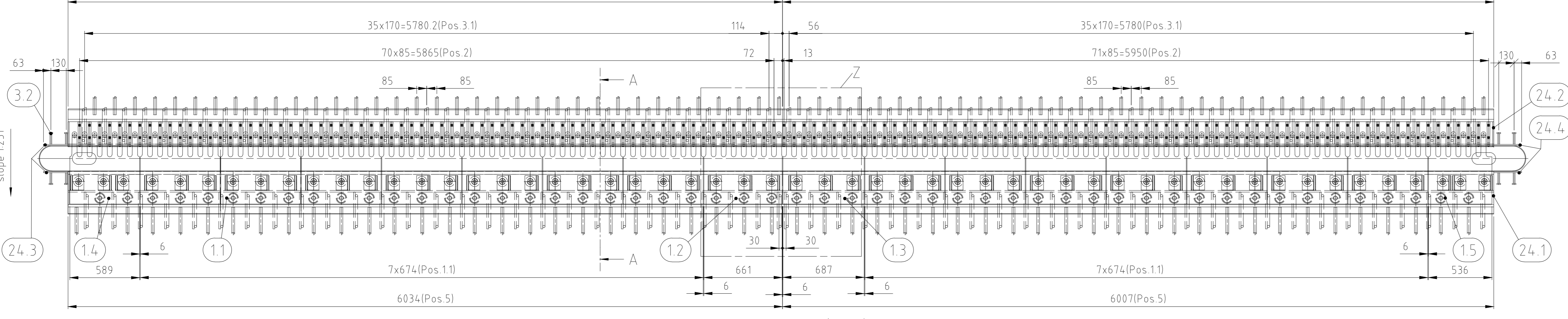


View at Mainspan (Nijmegen)

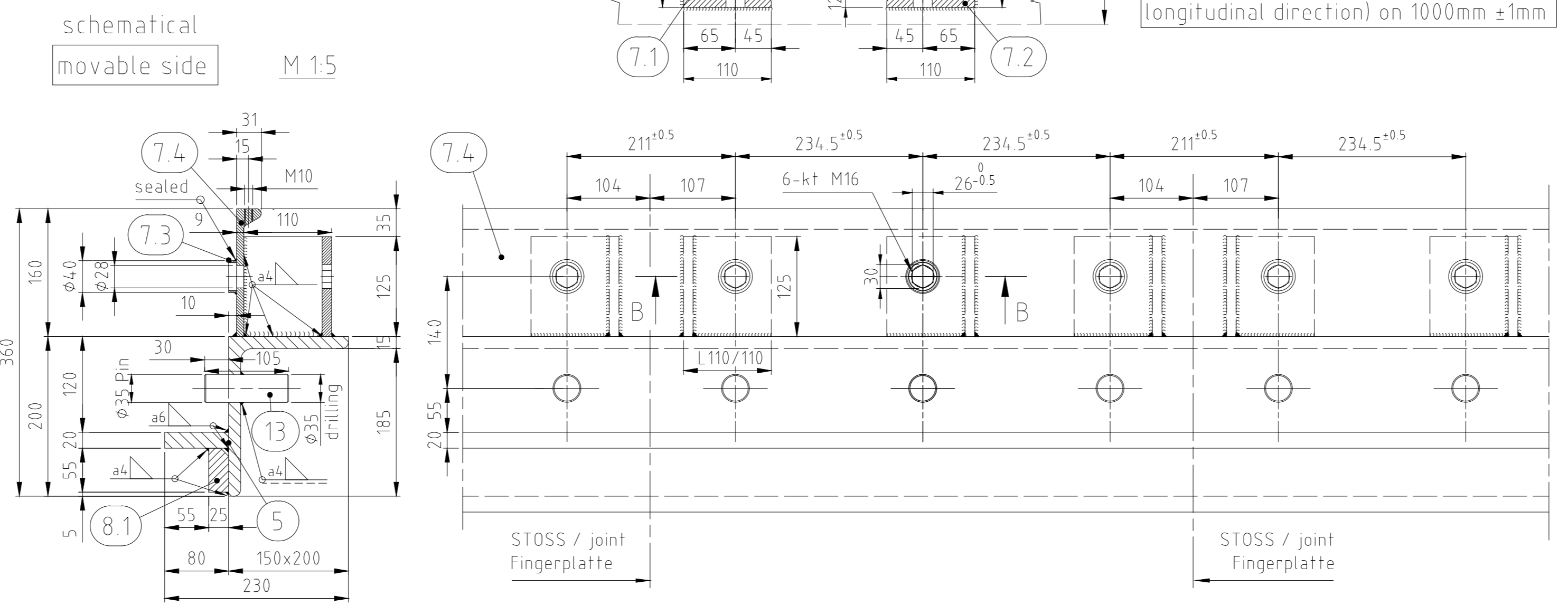
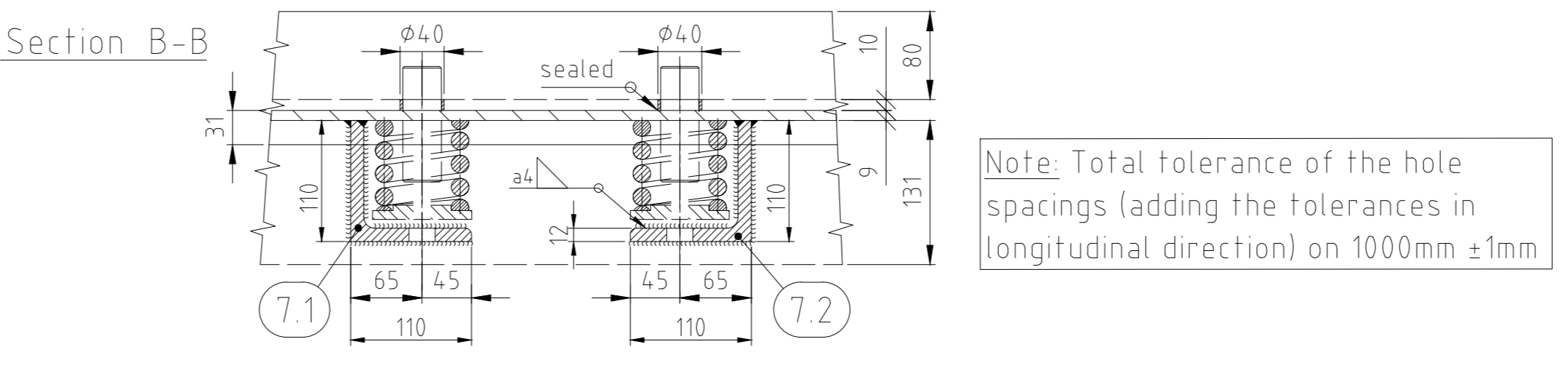
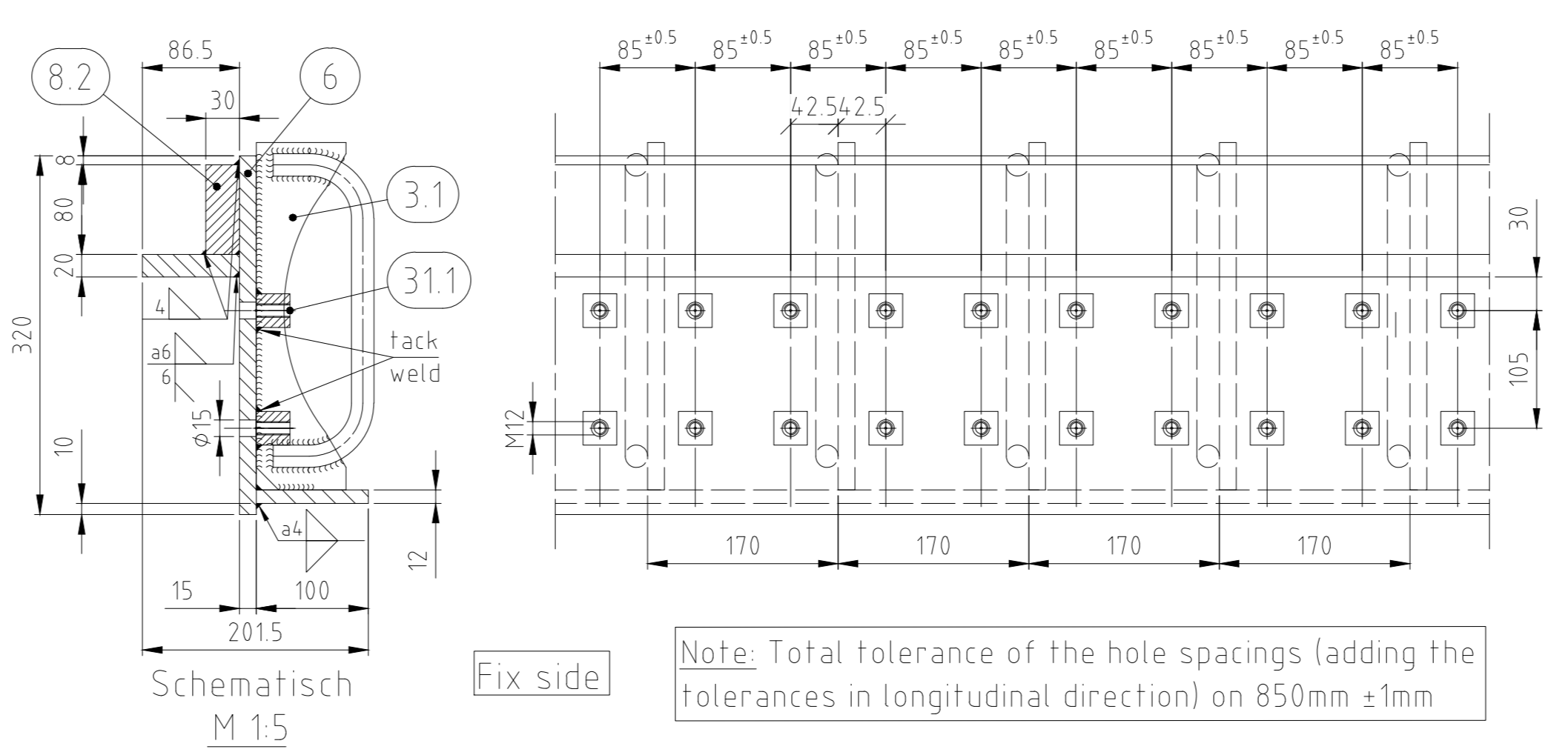
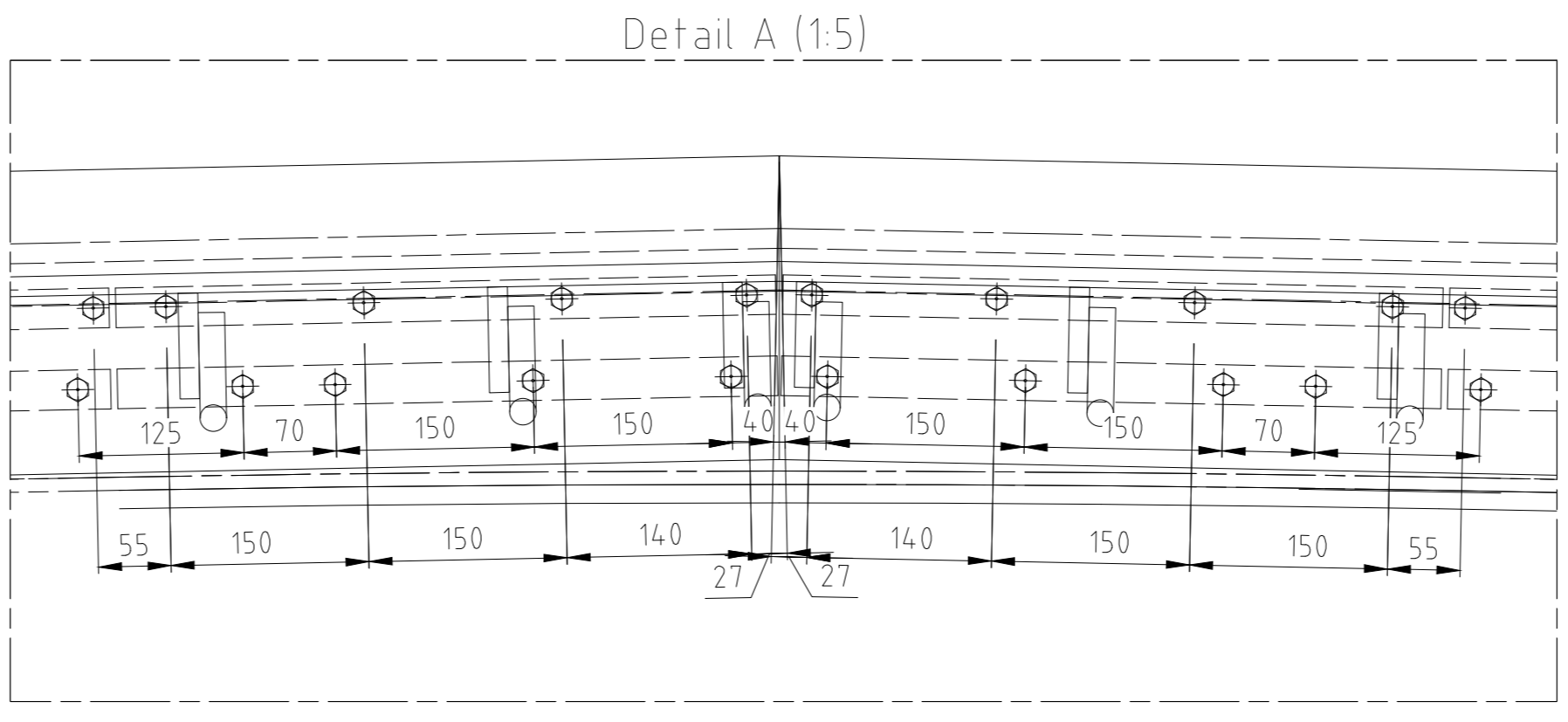
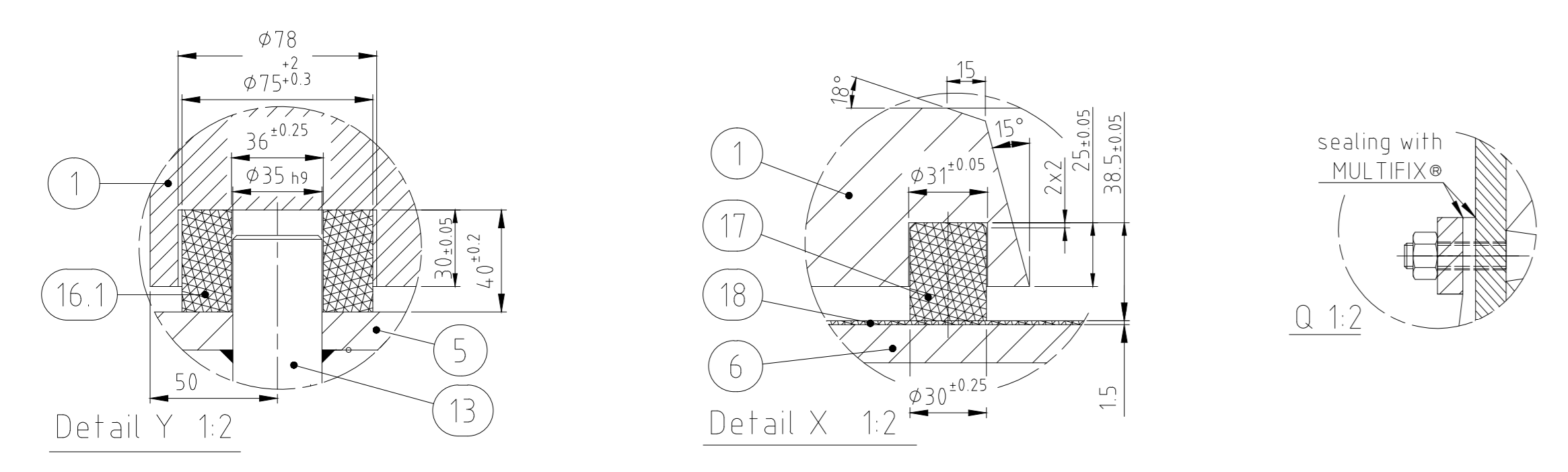
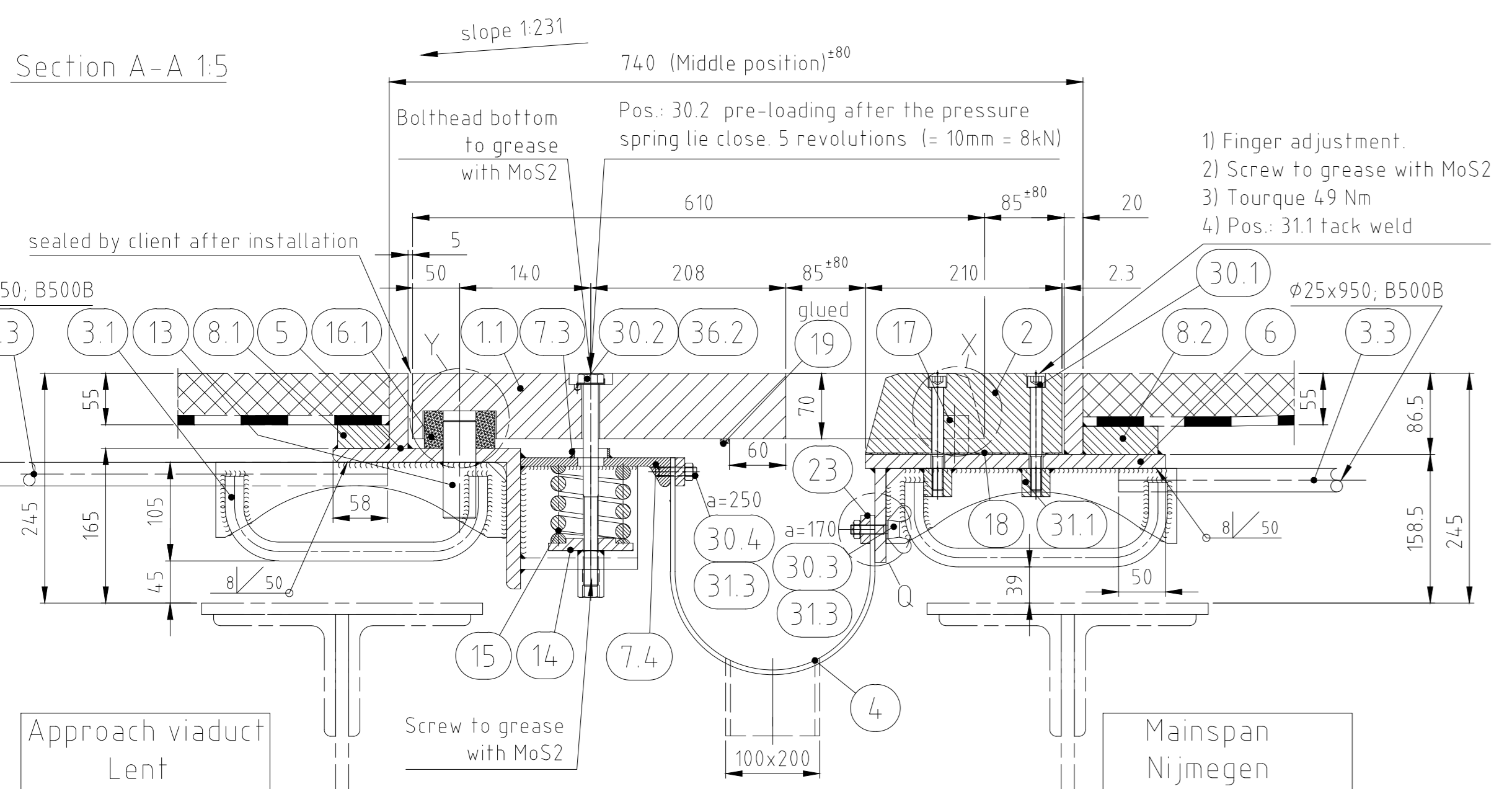


Scale 1:20
Axis 6-6A

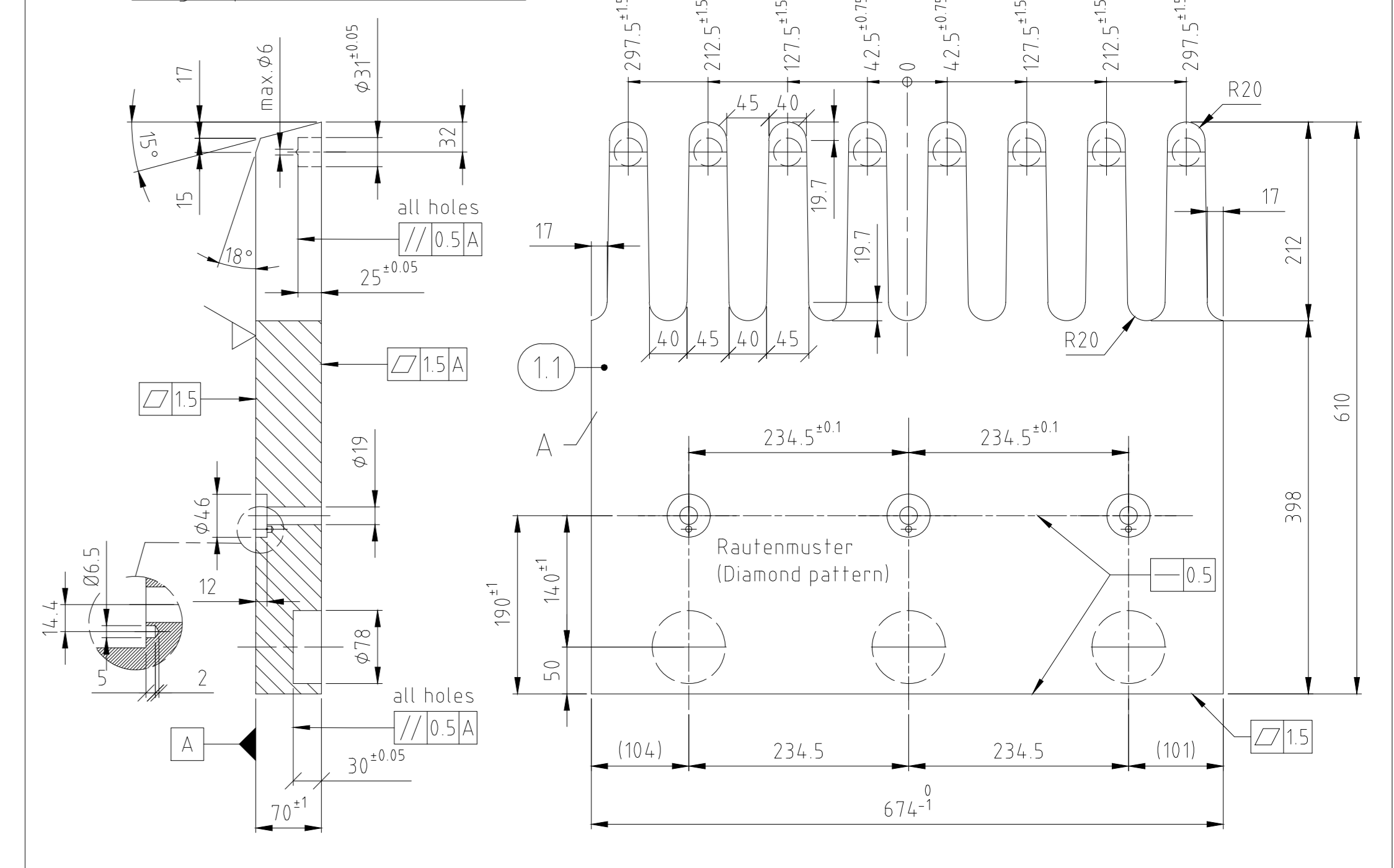
Mainspan (Nijmegen)



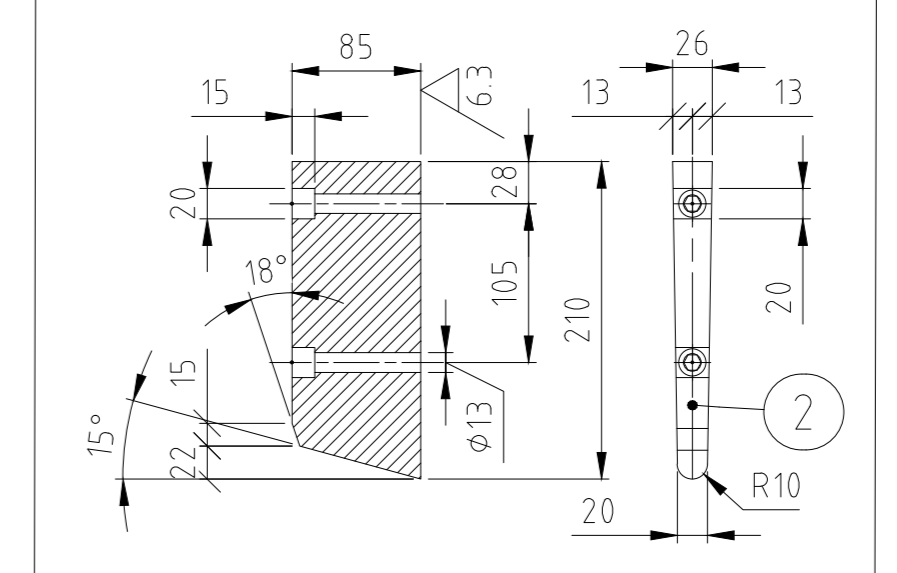
Approach viaduct (Lent)



Finger plate (movable) M 1:5

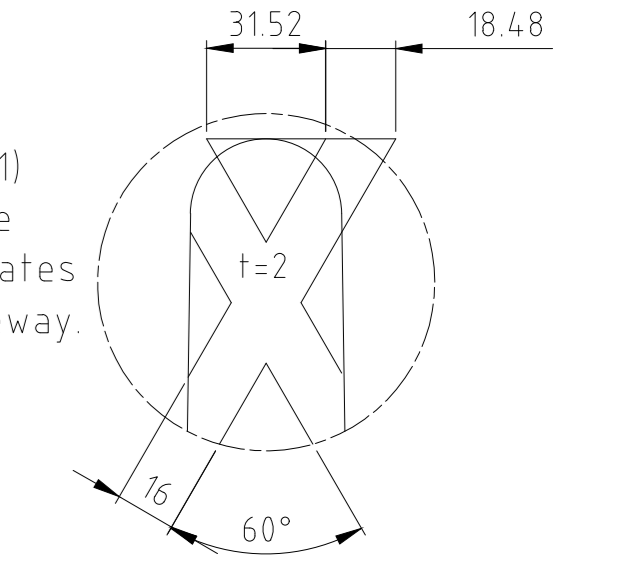


Finger fix GF 160 M 1:5

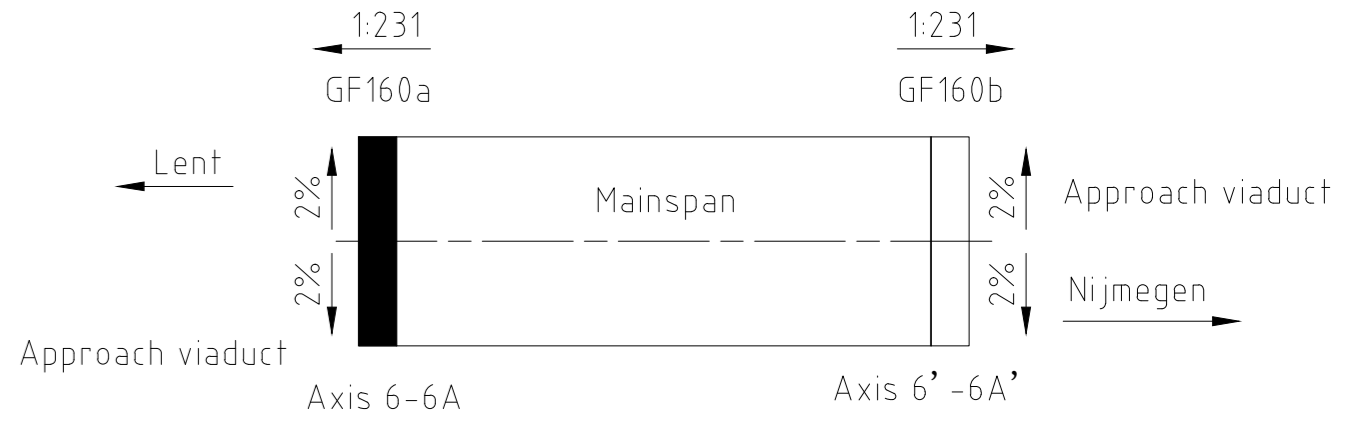


(M1:2)

Diamond pattern (f=2+1) must be created on the surface of all fingerplates (Pos: 1) in the carriageway. Pitch = 66,66mm



Location scheme



megeba logo and technical specifications table including drawing number, scale, and total movement.

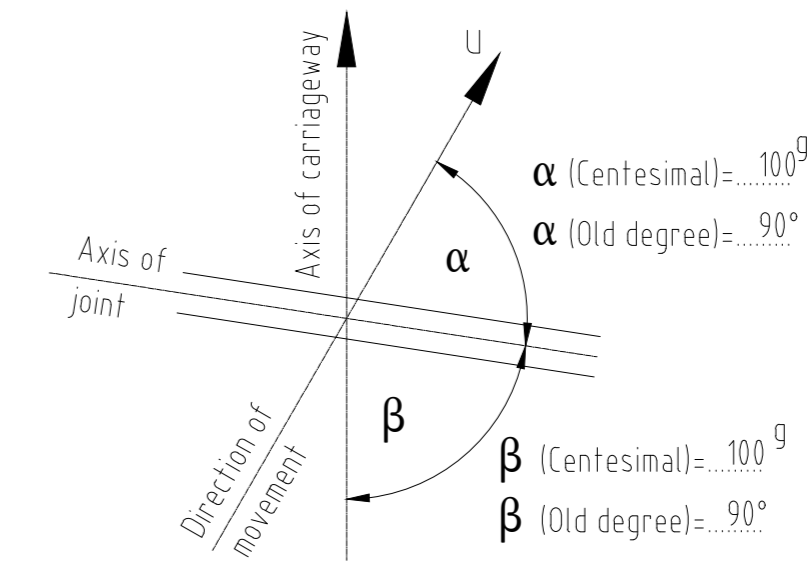


Table with 2 columns: Installation temperature and Dimension V. Values range from 85mm to 95mm for temperatures from 0°C to 20°C.

Information for workshop: All welds that are not labelled shall be carried out as a4/4mm.

Table for ALL NOT TOLERATED DIMENSIONS APPLY, listing standards for general tolerances, welded structures, flame cutting, and welding irregularities.

Corrosion protection megeba section including sub-construction details, material specifications, and preparation requirements.

Main material list table with columns for item number, description, dimensions, position, material, and article number.

Project information section including client name (Smits Neuhâtel infrastructuur BV), project name (Waalbrug Nijmegen), and drawing number (GF160a-NLD-MCH110977-B).