

Triple A class service for metal processing

Aigner Albrecht Anlagenbau is the competence centre and service provider for market leader clients in the areas of materials handling and conveyor systems, specialist construction and tooling as also manufacturer of the innovative XTEND road expansion joints.



www.xtend.technology

XTEND

- in compliance with ETAG 032
- XTEND → no expendable parts!
- standard anti-slip high-strength screw connection to EN 14399
- high driving comfort - permanent low noise

Traditional systems

- with expendable parts (constant maintenance – closures – costs)
- no standard-compliant high-strength screw connection
- segment transitions: low driving comfort - high noise emission

XTEND

- easy and fast replacement in case of damage
- replacement without "mechanical processing on the construction site"
→ no damage to corrosion protection



- short closure times → low costs

Traditional systems

- very limited and complex replacement in case of damage
- replacement usually possible only "with mechanical processing on site" (drilling, thread-cutting, welding, grinding,...)
→ the corrosion protection will be damaged

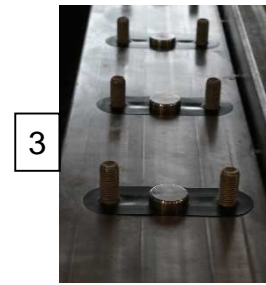
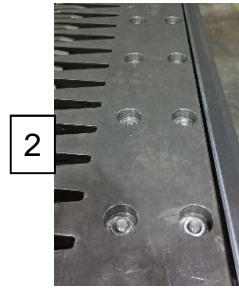
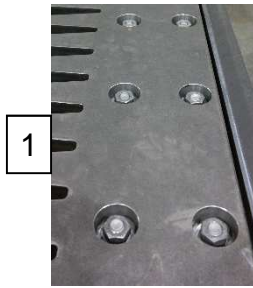


- long closure times → high costs

XTEND

- easy and fast replacement of the screw fixture sets
- patented slot-hole system
- milled in the substructure
- → short closure times – low costs

XTEND dismantling process



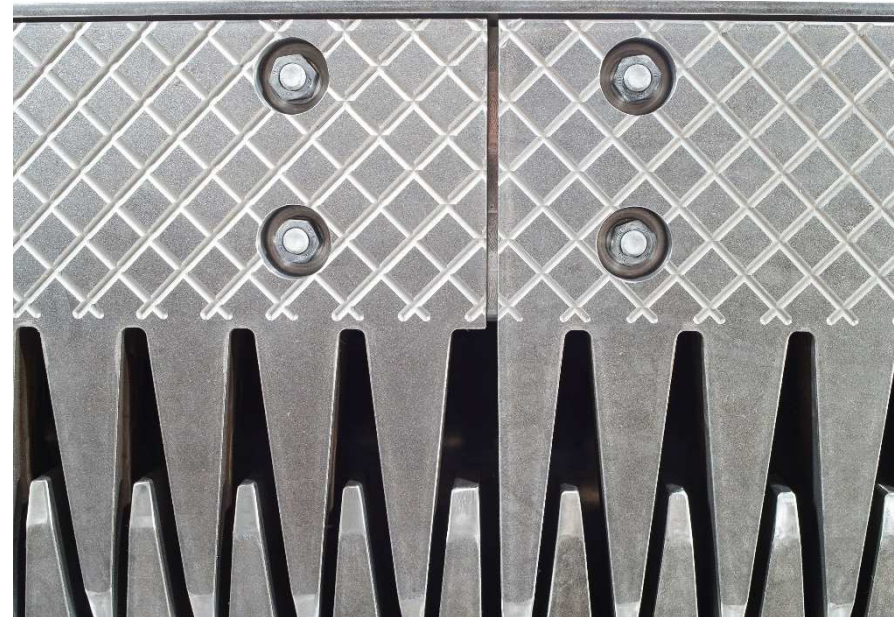
It's simply **assembly** in reverse order

Traditional systems

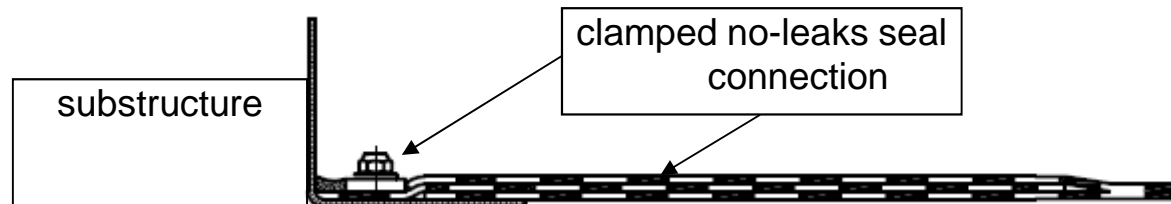
- replacement of the screw fixture sets is only possible to a very limited extent → long closure times, high costs



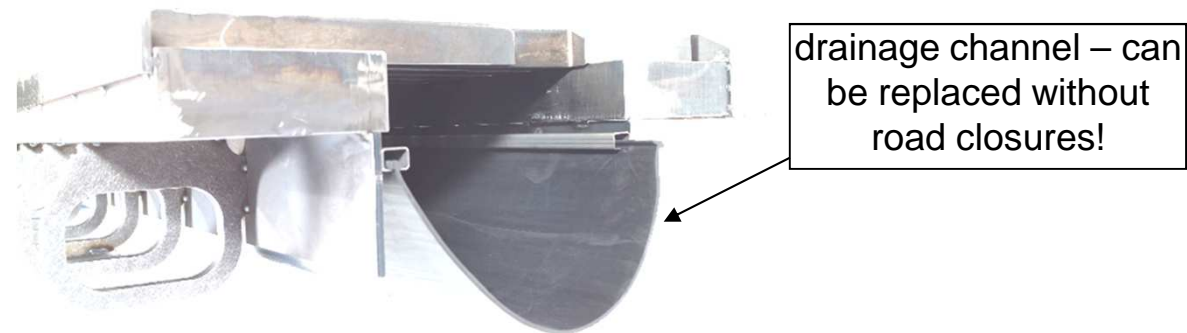
Anti-slip thanks to profiled surface structures



Water pressure resistant connection

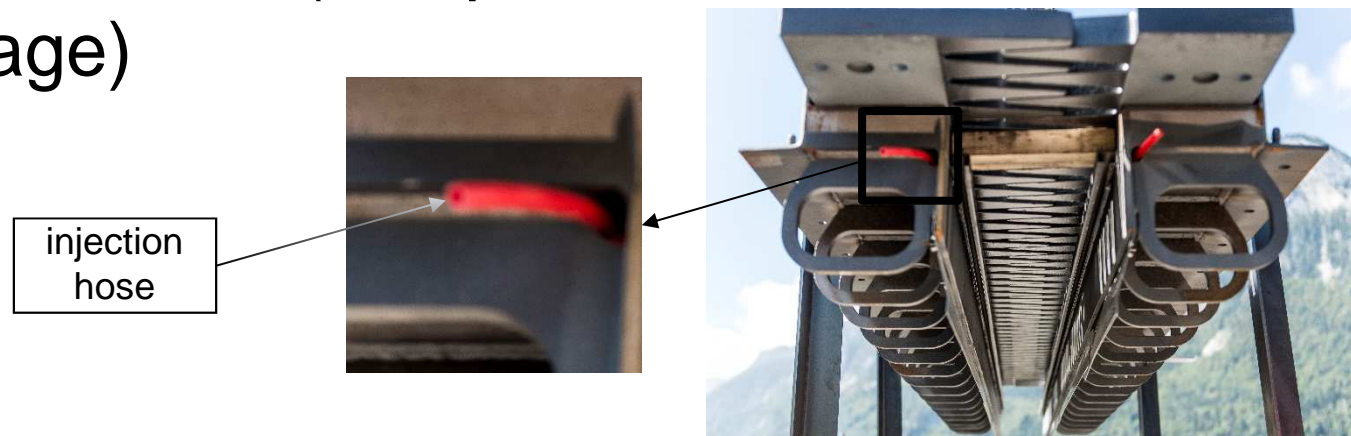


➤ ensures surface water flow-off

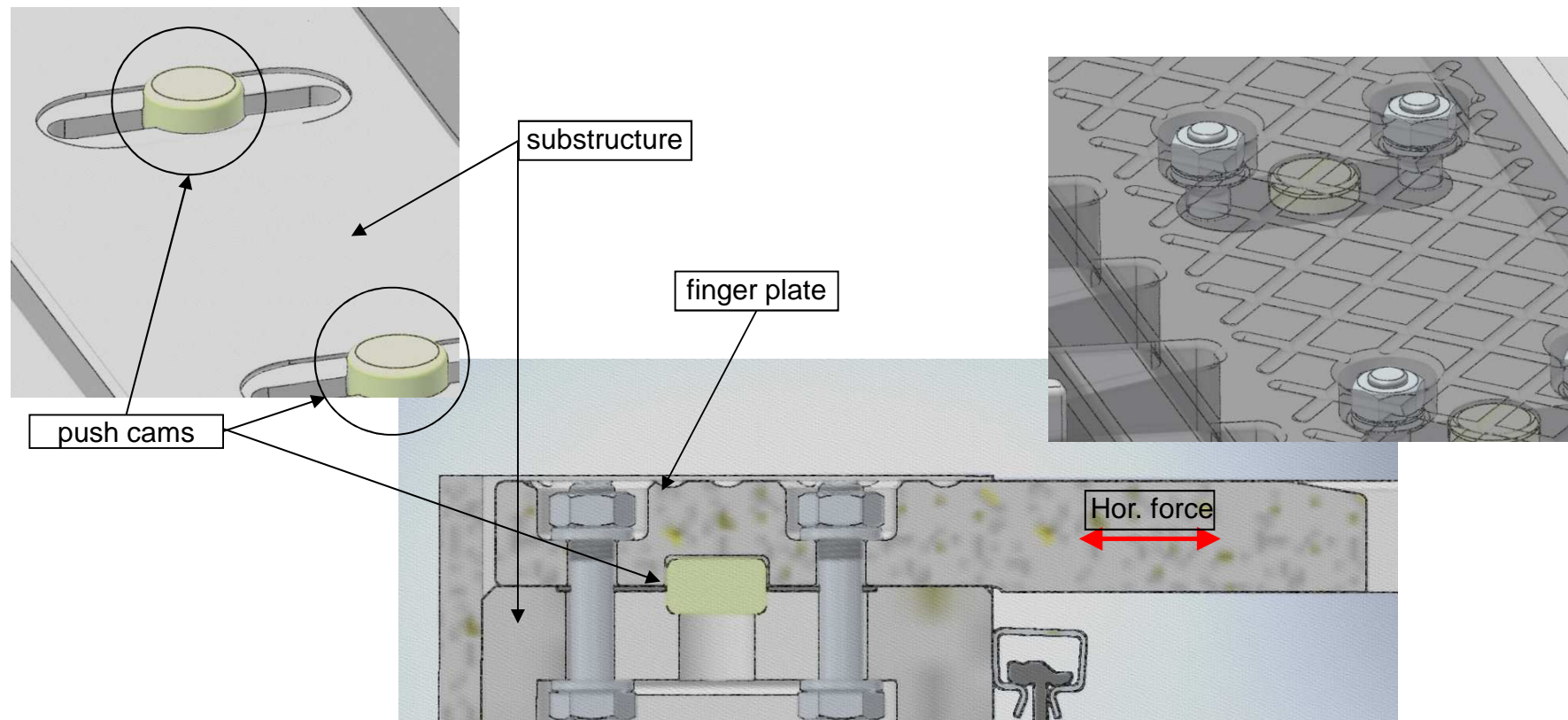


Assembly

- safe and easy concreting (with finger plates installed) – no bell formation in the steel substructure
- transition areas are delivered with integrated injection hoses (compensation for concrete shrinkage)

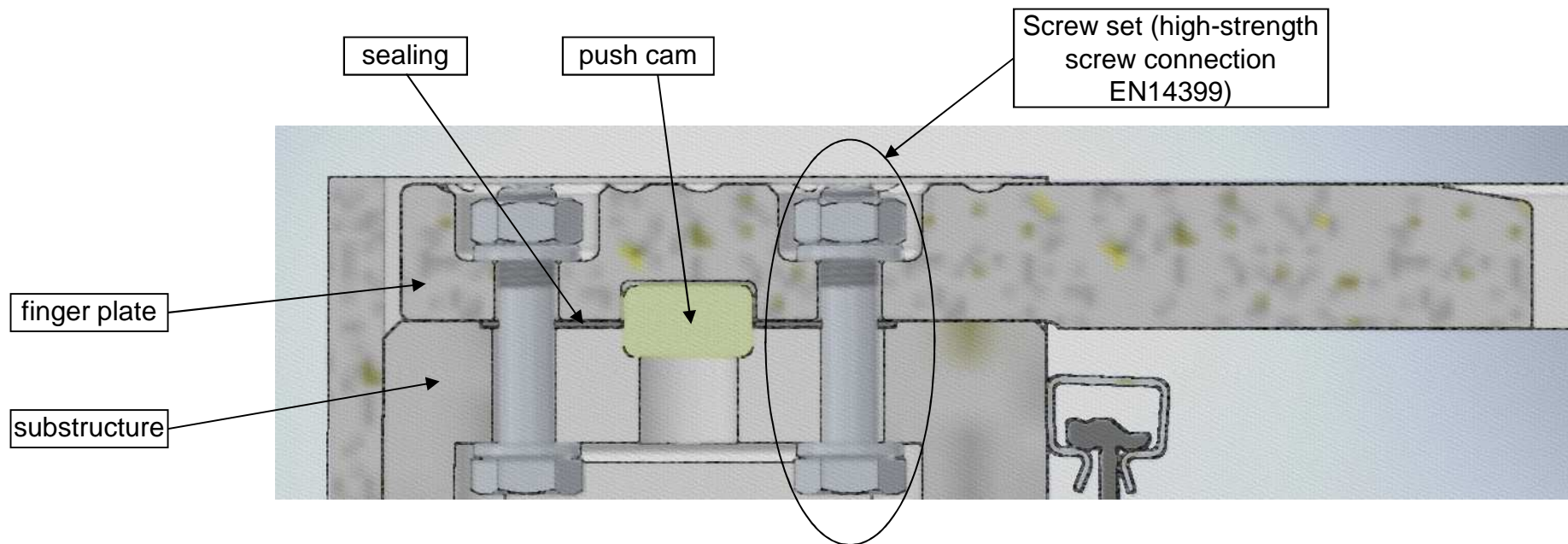


Push cams absorb horizontal force



Push cams are only provided with XTEND products

Easy-to-change screw fixture sets assure shortest road closure times



Your advantage: no threads in the substructure!

Solid substructure with flat-machined contact surface areas



mechanically processed substructure and finger plates!



Solid steel substructure

XTEND

- mechanically processed contact surface areas
- no preloading losses → standard HS screw connection (to EN 14399)

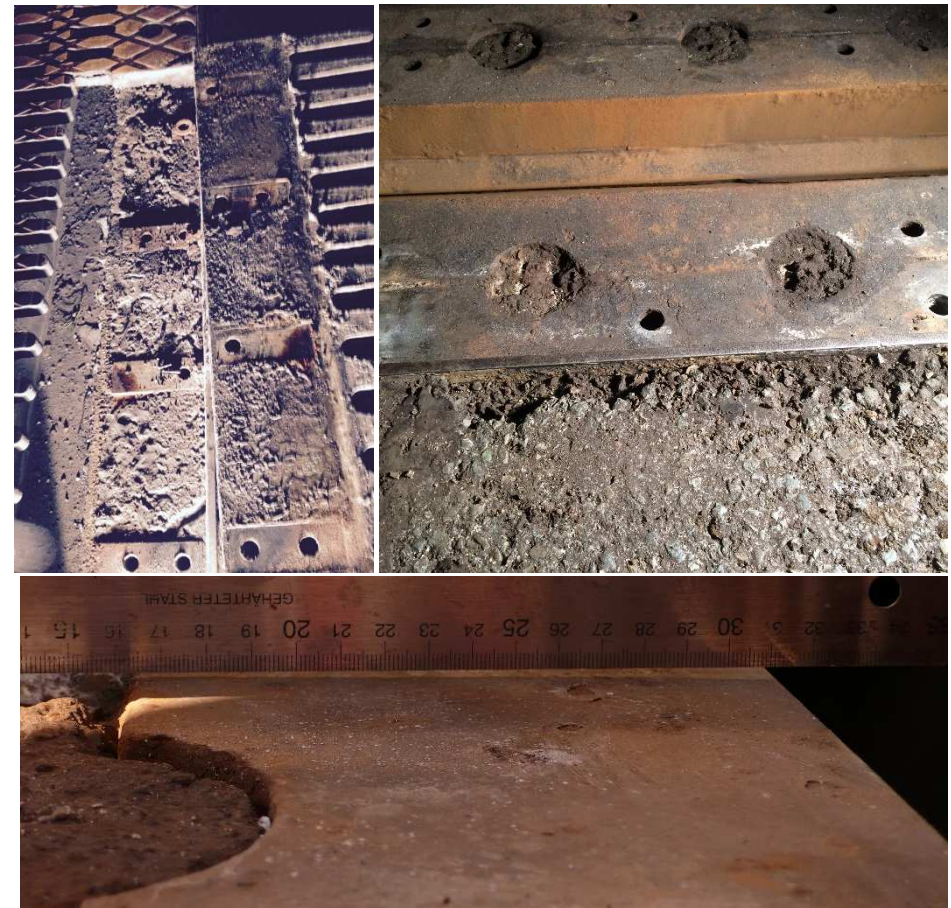
Traditional systems

- the contact surface areas are not processed
- preloading losses in the screw connections
- → screws loosen until the bolt breaks

XTEND



Traditional systems



XTEND

- soft screw joint (with a longer clamping length → higher tension reserves!
- drip-edge (water-drip) on the finger plates



Traditional systems

- hard screw joint (short clamping length) → hardly any tension reserves!
- no drip-edge



XTEND

- constructive radii for components with critical tension
- e.g. screw connection counterbore (low notching effect)



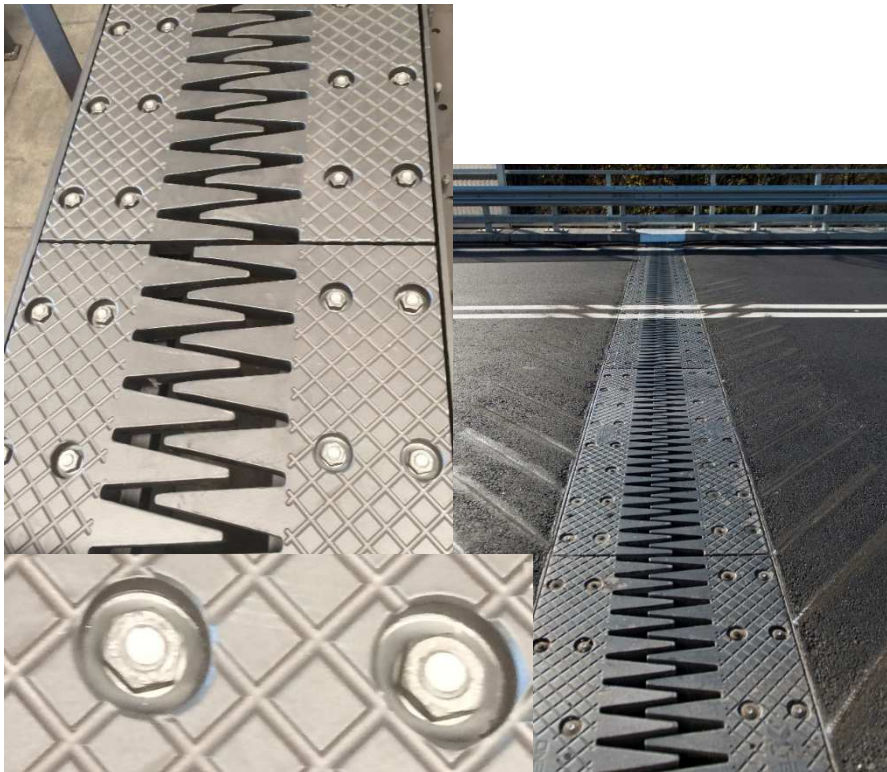
Traditional systems

- finger plate breakouts (on the screw contact surfaces)



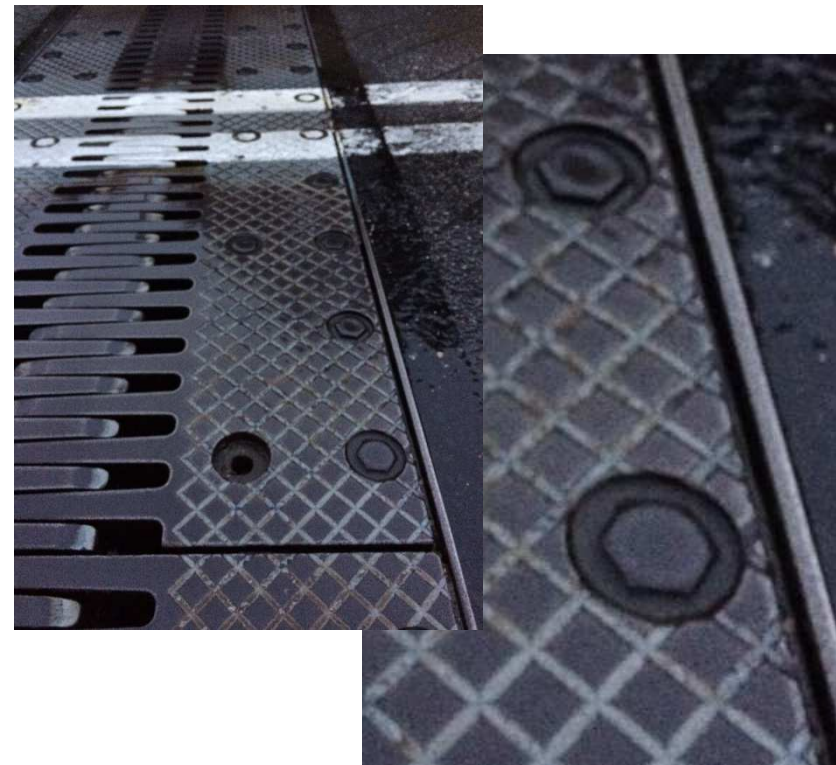
XTEND

- tightening on the nut (conforming to the standard)
- double-track screw connection



Traditional systems

- tightening on the screw contact surface
- no double-track screw connection



XTEND 80

- reliable tried and tested single tube system
- fully welded through seams for highest load levels
- for low expansion movement
- few parts



XTEND 100S

- solid design
- central support profile
- few parts
- optimised force transmission
- permanent welded seams
- precise, mechanically processed surfaces
- high driving comfort (low noise)

mechanically
processed

